



BAS70WT

Surface Mount Schottky Barrier Diode

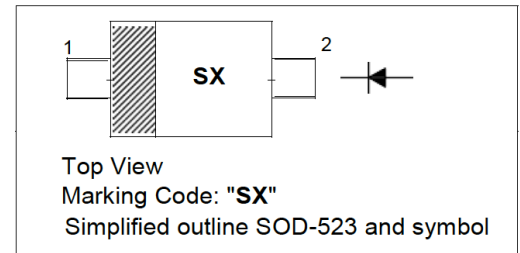
SMALL SIGNAL SCHOTTKY DIODE

Features

- Low forward voltage drop

PINNING

PIN	DESCRIPTION
1	Cathode
2	Anode



Maximum Ratings and Electrical Characteristics, Single Diode @T_A=25°C

Parameter	Symbol	Value	Unit
Repetitive Peak Reverse Voltage	V _{RRM}	70	V
Continuous Forward Current	I _F	70	mA
Surge Non-Repetitive Forward Current (tp = 10 ms)	I _{FSM}	1	A
Total Power Dissipation	P _{tot}	230	mW
Thermal Resistance Junction to Ambient ¹⁾	R _{thJA}	550	°C/W
Junction Temperature	T _J	150	°C
Storage Temperature Range	T _{stg}	- 65 to + 150	°C

¹⁾ Mounted on epoxy board, with recommended pad layout.

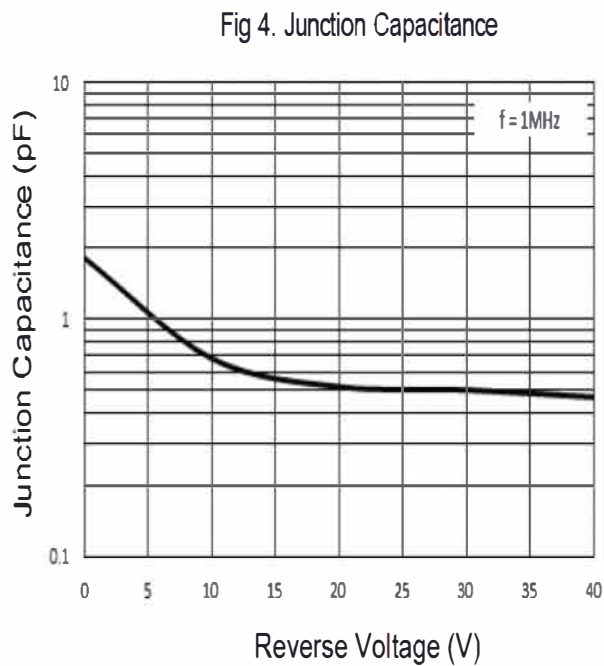
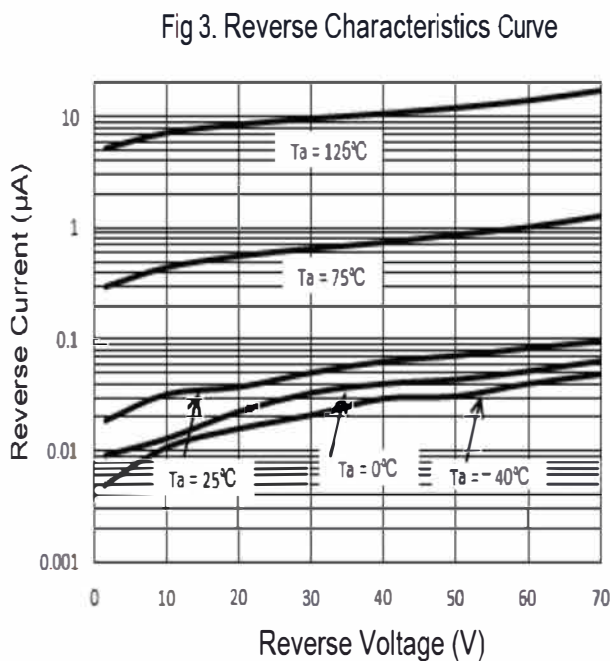
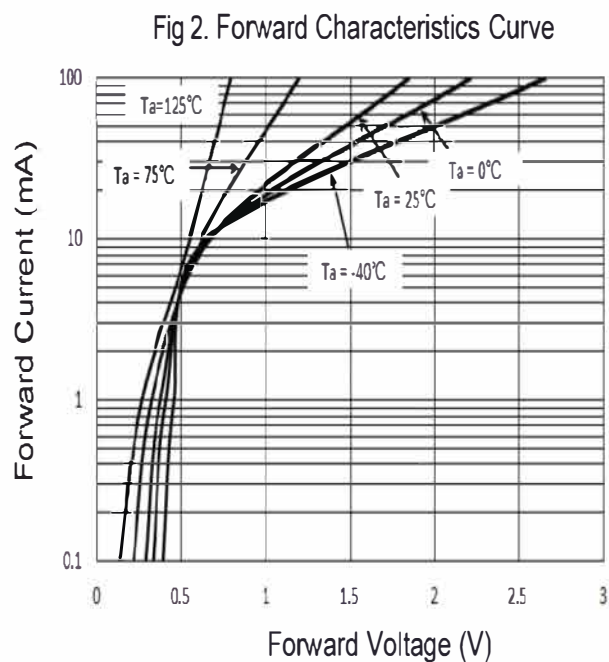
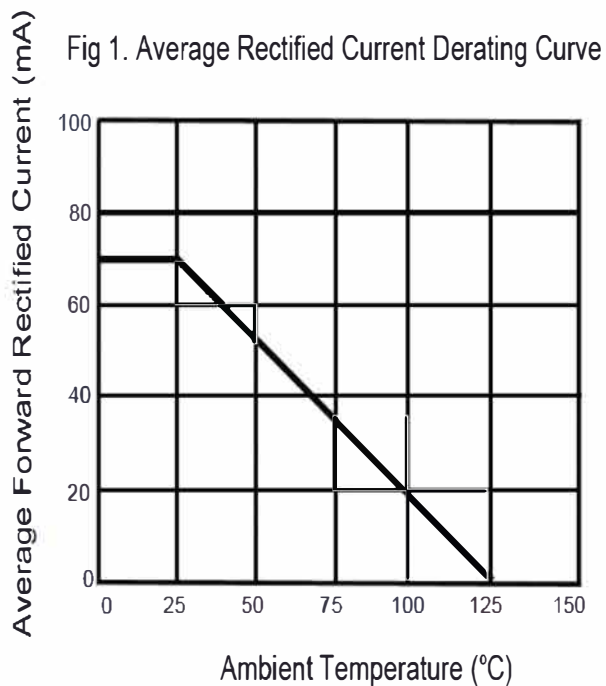
Electrical Ratings @T_A=25°C

Parameter	Symbol	Min.	Max.	Unit
Reverse Breakdown Voltage at I _R = 10 μA	V _{BR}	70	-	V
Forward Voltage at I _F = 1 mA	V _F	-	410	mV
Reverse Current at V _R = 50 V	I _R	-	100	nA
Diode Capacitance at V _R = 0 V, f = 1 MHz	C _{tot}	-	2	pF



BAS70WT

Electrical Characteristics Curves



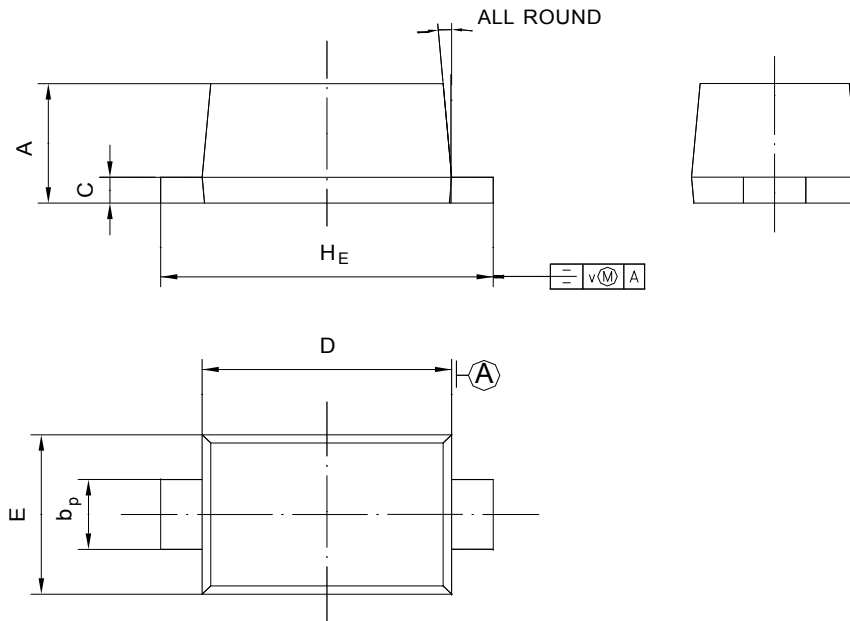


BAS70WT

PACKAGE OUTLINE

Plastic surface mounted package; 2 leads

SOD-523



UNIT	A	b _p	C	D	E	H _E	V	∠
mm	0.68	0.4	0.135	1.25	0.85	1.7	0.1	5°
	0.58	0.3	0.100	1.15	0.75	1.5		